

# Demo Questions

## CompTIA 220-1002 Exam

CompTIA A+ Certification Exam: Core 2

Thank you for downloading 220-1002 Exam PDF

### Question #1

SIMULATION -

A user has installed two new drives in one of the computers in the computer lab and has been unable to format Disk1 from the command prompt.

The lab requires that Disk1 be a dynamic disk configured with two partitions. The first partition must be 256,000 MB in size and mapped to drive F. The second partition must be 512,000 MB in size and mapped to drive G.

The new partitions must be formatted to ensure that user's files can be secured from other users and that the disk must be configured to account for future redundancy.

Make sure to maintain a consistent file system.

## INSTRUCTIONS:

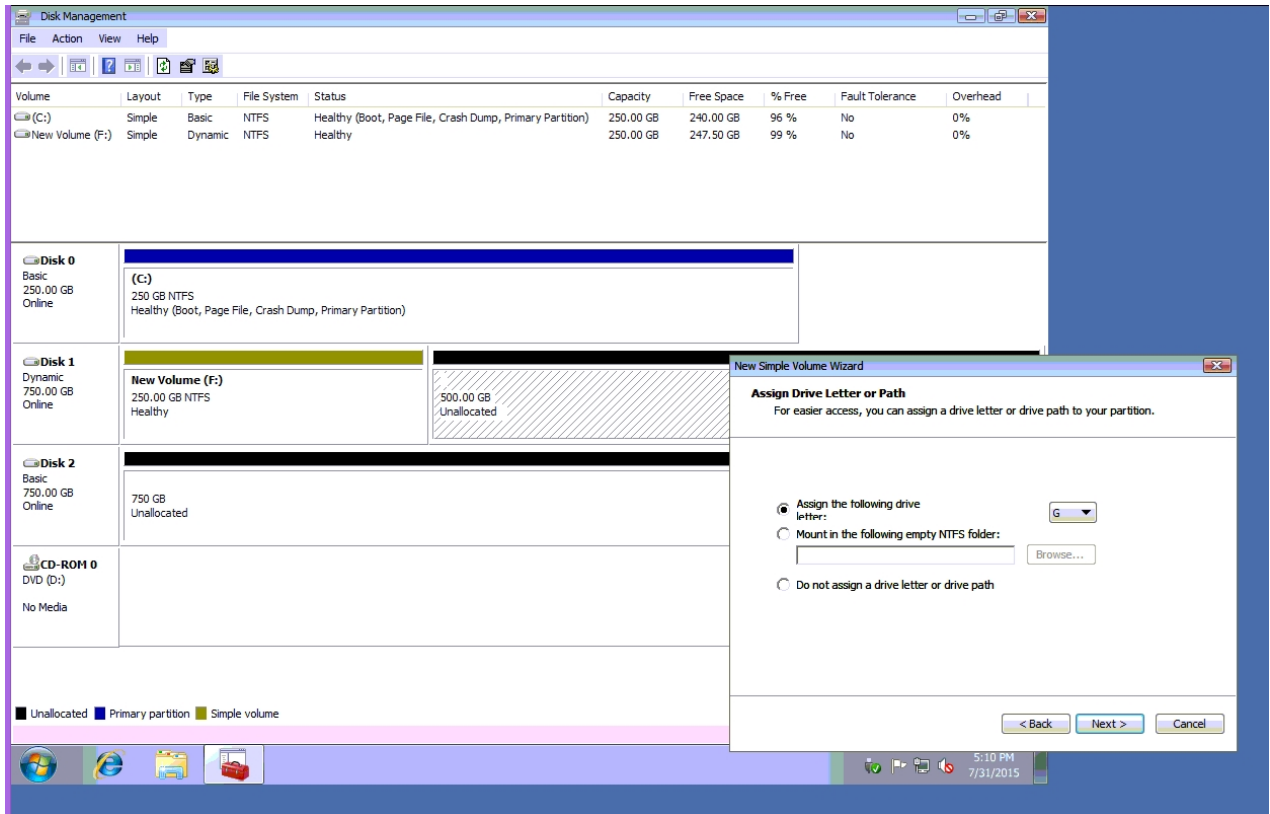
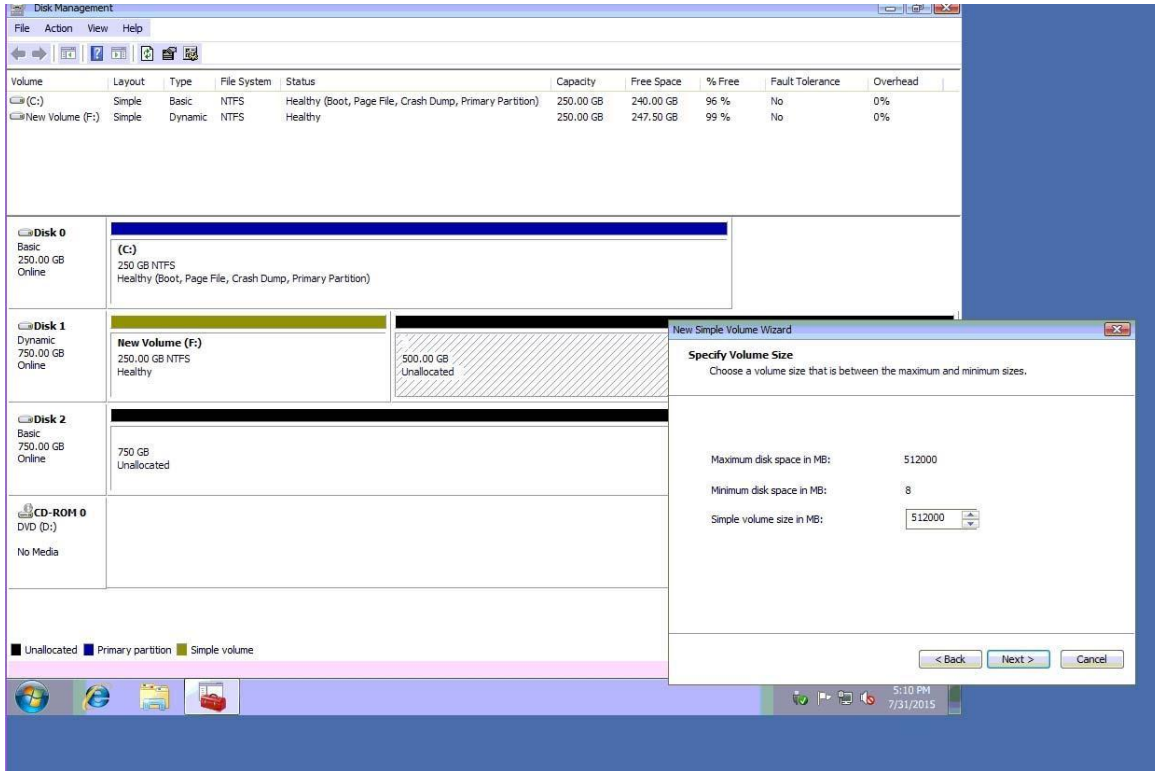


**Correct Answer:** Please review explanation for detailed answer.

Please review explanation for detailed answer.

- ⇒ Right click on disk 1, click on initialize
- ⇒ Choose disk and option as MBR. Hit ok.
- ⇒ Again, right click on disk 1 and choose convert to dynamic disk.
- ⇒ Now right click on disk 1 and choose new simple volume.
- ⇒ Specify storage as 256000 and assign a drive letter F and choose file system as NTFS and click finish.
- ⇒ Do the same thing for rest of space of disk 1, assigning 512000MB and using Disc G

Here are the screen shots showing this process:



Disk Management

File Action View Help

Volume	Layout	Type	File System	Status	Capacity	Free Space	% Free	Fault Tolerance	Overhead
(C:)	Simple	Basic	NTFS	Healthy (Boot, Page File, Crash Dump, Primary Partition)	250.00 GB	240.00 GB	96 %	No	0%
New Volume (F:)	Simple	Dynamic	NTFS	Healthy	250.00 GB	247.50 GB	99 %	No	0%

<b>Disk 0</b> Basic 250.00 GB Online	(C:) 250 GB NTFS Healthy (Boot, Page File, Crash Dump, Primary Partition)
<b>Disk 1</b> Dynamic 750.00 GB Online	<b>New Volume (F:)</b> 250.00 GB NTFS Healthy
<b>Disk 2</b> Basic 750.00 GB Online	750 GB Unallocated
<b>CD-ROM 0</b> DVD (D:) No Media	

Unallocated
  Primary partition
  Simple volume

**New Simple Volume Wizard**

**Format Partition**  
To store data on this partition, you must format it first.

Choose whether you want to format this volume, and if so, what settings you want to use.

Do not format this volume  
 Format this volume with the following settings:

File system:   
 Allocation unit size:   
 Volume label:

Perform a quick format  
 Enable file and folder compression

5:10 PM  
7/31/2015

The screenshot displays the Windows Disk Management console. At the top, a table lists the volumes:

Volume	Layout	Type	File System	Status	Capacity	Free Space	% Free	Fault Tolerance	Overhead
(C:)	Simple	Basic	NTFS	Healthy (Boot, Page File, Crash Dump, Primary Partition)	250.00 GB	240.00 GB	96 %	No	0%

Below the table, four disks are listed:

- Disk 0:** Basic, 250.00 GB, Online. Contains a (C:) partition: 250 GB NTFS, Healthy (Boot, Page File, Crash Dump, Primary Partition).
- Disk 1:** Unknown, 750.00 GB, Not Initialized. Unallocated.
- Disk 2:** Unknown, 750.00 GB, Not Initialized. Unallocated.
- CD-ROM 0:** DVD (D:), No Media.

An "Initialize Disk" dialog box is open, showing the following options:

- Select disks:** Disk 1 and Disk 2 are checked.
- Use the following partition style for the selected disks:** MBR (Master Boot Record) is selected.
- Note:** The GPT partition style is not recognized by all previous versions of Windows. It is recommended for disks larger than 2TB, or disks used on Itanium-based computers.

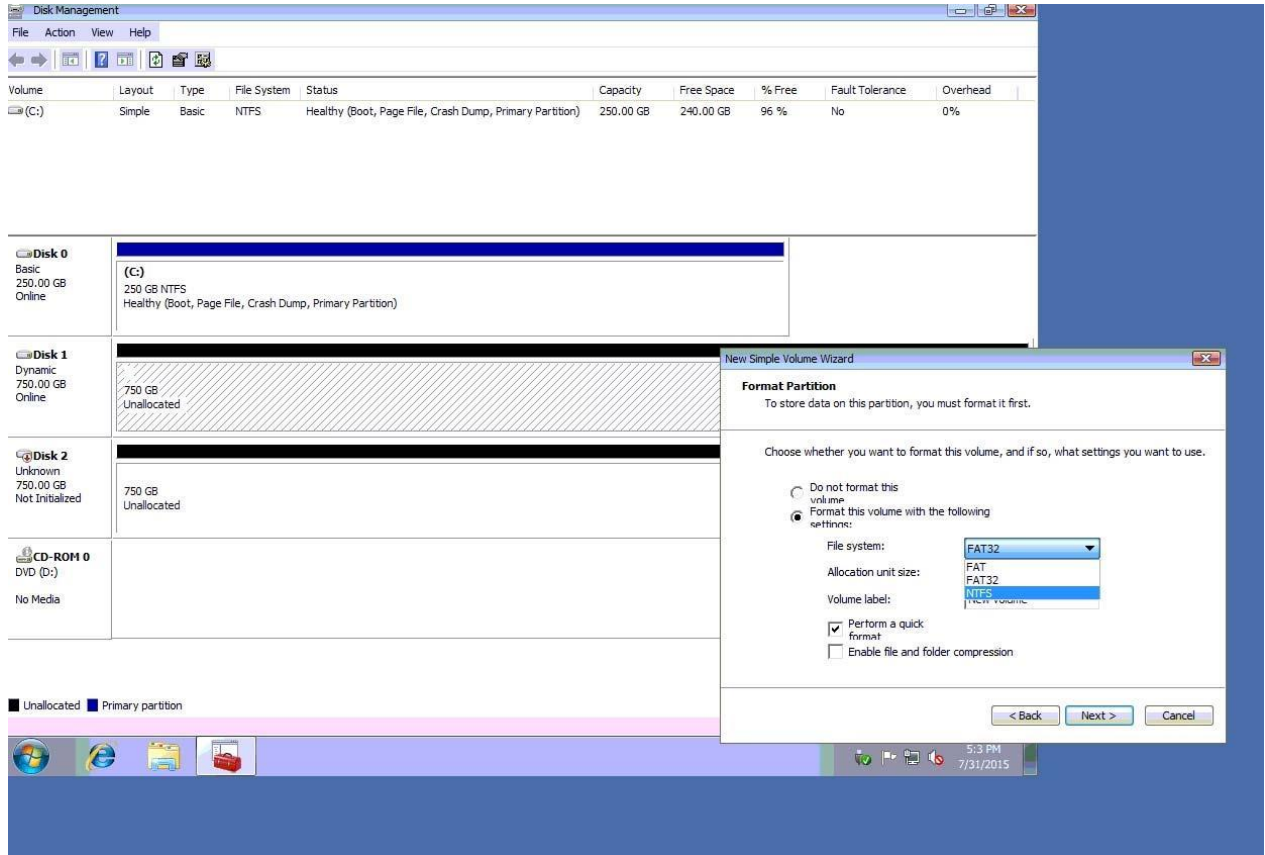
The taskbar at the bottom shows the system tray with the time 5:00 PM and date 7/31/2015.

The screenshot shows the Windows Disk Management console. At the top, a table lists disk volumes:

Volume	Layout	Type	File System	Status	Capacity	Free Space	% Free	Fault Tolerance	Overhead
(C:)	Simple	Basic	NTFS	Healthy (Boot, Page File, Crash Dump, Primary Partition)	250.00 GB	240.00 GB	96 %	No	0%

Below the table, the details for Disk 0 are shown: (C:) 250 GB NTFS, Healthy (Boot, Page File, Crash Dump, Primary Partition). Disk 1 is Dynamic, 750 GB, Online, with 750 GB of unallocated space. Disk 2 is Unknown, 750 GB, Not Initialized, with 750 GB of unallocated space. CD-ROM 0 is a DVD (D:) with no media.

The 'New Simple Volume Wizard' dialog is open, showing the 'Assign Drive Letter or Path' step. The 'Assign the following drive letter:' option is selected. A dropdown menu is open, showing drive letters from E to Z. The system tray at the bottom right shows the time as 5:33 PM on 7/31/2015.



**Disk Management**

File Action View Help

Volume	Layout	Type	File System	Status	Capacity	Free Space	% Free	Fault Tolerance	Overhead
(C:)	Simple	Basic	NTFS	Healthy (Boot, Page File, Crash Dump, Primary Partition)	250.00 GB	240.00 GB	96 %	No	0%
New Volume (F:)	Simple	Dynamic	NTFS	Healthy	250.00 GB	247.50 GB	99 %	No	0%
New Volume (G:)	Simple	Dynamic	NTFS	Healthy	500.00 GB	495.00 GB	99 %	No	0%

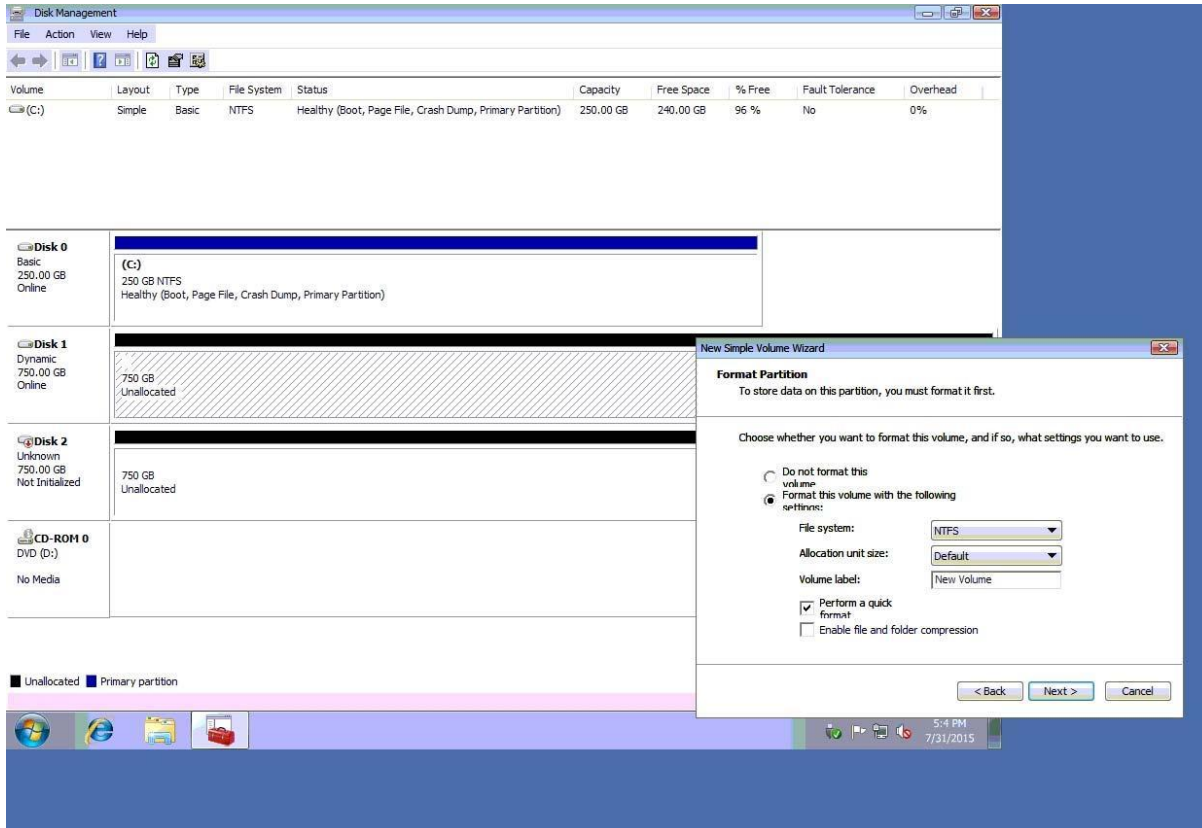
  

<b>Disk 0</b> Basic 250.00 GB Online	<p>(C:) 250 GB NTFS Healthy (Boot, Page File, Crash Dump, Primary Partition)</p>
<b>Disk 1</b> Dynamic 750.00 GB Online	<p><b>New Volume (F:)</b> 250.00 GB NTFS Healthy</p> <p><b>New Volume (G:)</b> 500.00 GB NTFS Healthy</p>
<b>Disk 2</b> Basic 750.00 GB Online	<p>750 GB Unallocated</p>
<b>CD-ROM 0</b> DVD (D:) No Media	

Unallocated
  Primary partition
  Simple volume

5:13 PM  
7/31/2015





## Question #2

A technician arrives on site to find that two users who have the same model on Android smartphone are having the same issue with a specific application. Whenever they attempt to launch the application, it fails and gives an error message. Which of the following should the technician do FIRST?

- A. Reinstall the application
- B. Roll back the application to the earlier version
- C. Clear the application cache
- D. Update the OS of the smartphones

**Correct Answer: D**

## Question #3

A technician is working on a Windows 10 PC that is running slowly. Which of the following commands should the technician use to correct this issue? (Select two.)

- A. dir
- B. chdisk
- C. diskpart
- D. ipconfig
- E. format
- F. diskpart

**Correct Answer:** BC

#### Question #4

An administrator is setting up a Windows terminal server. Which of the following settings should the administrator modify to increase server security? (Select two.)

- A. Change the default access port
- B. Enforce password complexity
- C. Put the terminal server into the router's DMZ
- D. Disable logon time restrictions
- E. Block all unused ports on the LAN smart switch
- F. Use the local client certificate for server authentication

**Correct Answer:** CE

#### Question #5

A company has hired a new IT firm to manage its network switches and routers.

The firm is geographically separated from the company and will need to be able to securely access the devices.

Which of the following will provide the ability to access these devices?

- A. Telnet
- B. SSH
- C. RDP
- D. VNC

**Correct Answer:** B

#### Question #6

A small office's wireless network was compromised recently by an attacker who brute forced a PIN to gain access. The attacker then modified the DNS settings on the router and spread malware to

the entire network.

Which of the following configurations MOST likely allowed the attack to take place? (Select two.)

- A. Guest network
- B. TKIP
- C. Default login
- D. Outdated firmware
- E. WPS
- F. WEP

**Correct Answer:** CF

### Question #7

A client wants a technician to create a PC naming convention that will make the client's PCs easier to track and identify while in use. Which of the following naming convention formats should the technician follow?

- A. Domain name, location, IP address
- B. Domain name, location, asset ID
- C. Asset ID, MAC address
- D. Location, RFID

**Correct Answer:** C

### Question #8

Which of the following provide the BEST security for a server room? (Select two.)

- A. Badge reader
- B. Bollard
- C. Biometric lock
- D. Cable lock
- E. USB token
- F. Privacy window shades

**Correct Answer:** AC

### Question #9

Which of the following threats uses personalized information in an attempt at obtaining information?

- A. Whaling
- B. Impersonation
- C. Spoofing
- D. Spear phishing

**Correct Answer:** *D*

#### **Question #10**

A technician receives an invalid certificate error when visiting a website with port 443 enabled. Other computers on the same LAN do not exhibit this symptom.

Which of the following needs to be adjusted on the workstation to fix the issue?

- A. Date and time
- B. UEFI boot mode
- C. Logon times
- D. User access control

- **Correct Answer:** *A*