

Demo Questions

PEGASYSTEMS PEGAPCRSA80V1_2019 Exam

Pega Certified Robotics System Architect 80V1 2019

Thank you for downloading **PEGAPCRSA80V1_2019** Exam

PDF

Question #1 *Topic 1*

Select two statements that correctly describe adapters. (Choose two.)

- A. Adapters have accessible properties, methods, and events that launch, monitor, and expose enterprise applications for automation.
 - B. An adapter allows users to integrate with an application built on a specific platform.
-
- C. An adapter orchestrates the deployment of a robotic solution and monitors the robots of the robot worker pool.
 - D. An adapter integrates with Windows applications by using a self-hosted REST service through application JavaScript.

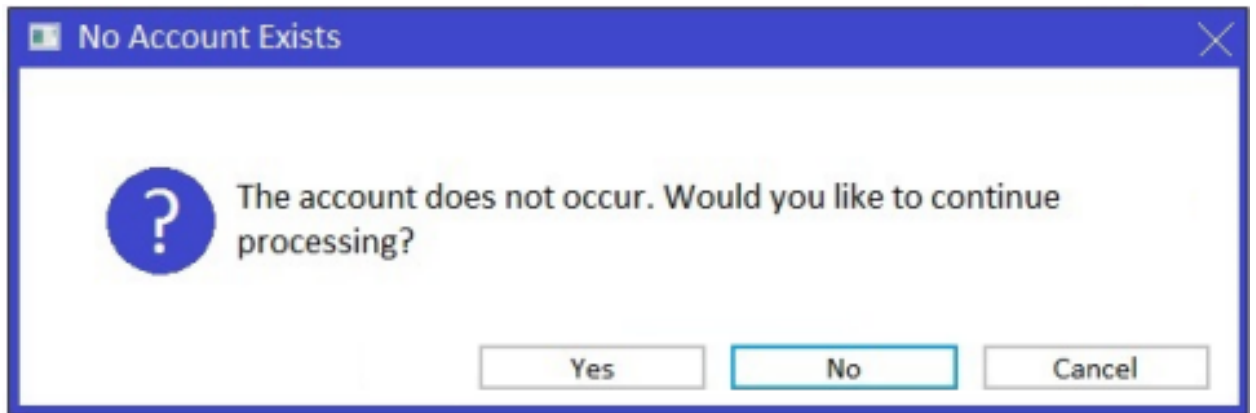
Correct Answer: AB

Reference:

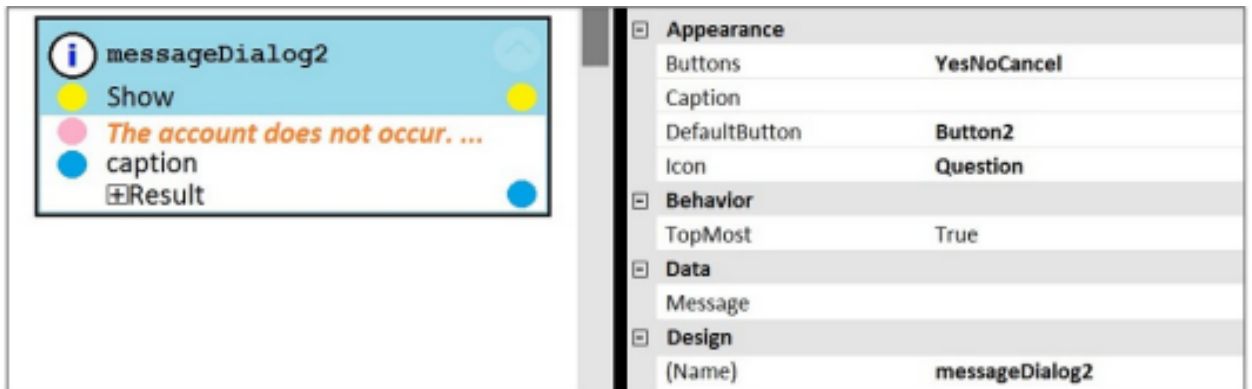
<https://community1.pega.com/community/product-support/question/adapter-pegas>

Question #2 *Topic 1*

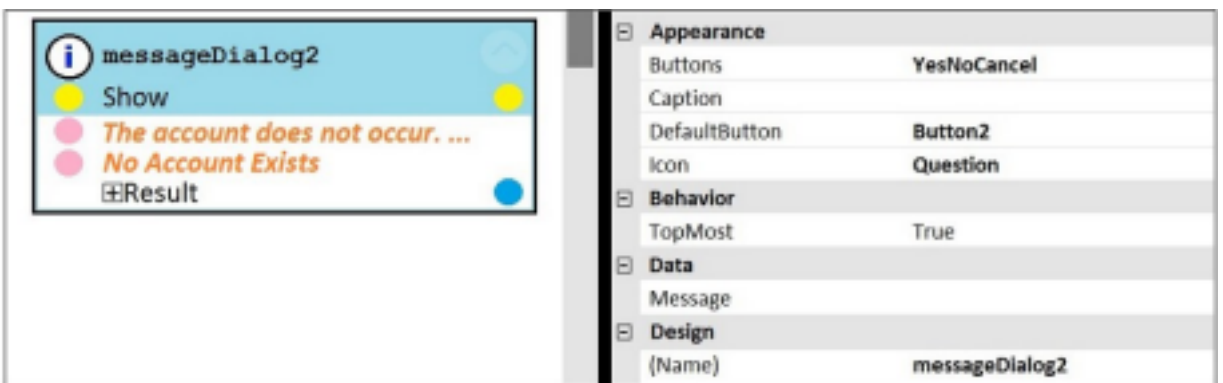
You add a MessageDialog component to an automation. Based on the following image, which option shows the configuration settings that generates the message dialog?



A.



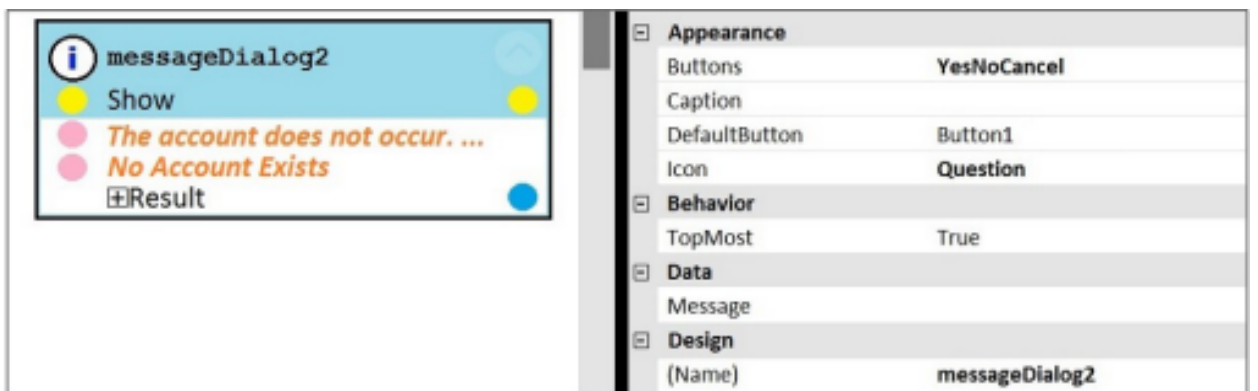
B.



C.



D.



Correct Answer: D

Question #3 Topic 1

You are designing an automation that adds new customers to an online insurance web site. If a customer exists, a pop-up window is displayed with an error message, which closes automatically after 35 seconds.

While debugging the automation, you notice that you are receiving a control not created exception message in the Add Customer procedure after a page navigation occurs.

How do you resolve the exception?

- A. Add a missing created event in the Add Customer procedure.
- B. Ensure the waitForCreate timeout is longer than 35 seconds in the Add Customer procedure.
- C. Ensure the isCreated timeout is longer than 35 seconds in the Add Customer procedure.
- D. Add a missing waitForEvent.Exists method in the Add Customer procedure.

Correct Answer: D

Question #4 *Topic 1*

Pega Robotic Coding Standards suggest organization of project components. You have added the _GC_CRM project item to the CRMPj.

Which three components are recommended to be placed in the _GC_CRM project item? (Choose three.)

- A. ForLoop
- B. Switch

- C. stringUtils
-
- D. messageDialog
- E. dateTimeUtils

Correct Answer: CDE

Question #5 *Topic 1*

Which of the following controls cannot be added to the Windows form?

- A. ComboBox
- B. ProgressBar

- C. Pointer

- D. PictureBox

Correct Answer: C

Question #6 *Topic 1*

HOTSPOT -

Pega Robot Studio provides five rules on how to differentiate between cloneable application objects when using key assignments in automations. The first rule states that an event creates the instance to set the context of a cloneable object. The remaining four rules state the requirements for a key assignment.

In the Answer Area, determine if each rule description requires a key assignment.

Hot Area:

Answer Area

<u>Rule Description</u>	<u>Key Assignment Required?</u>
An event from Child Context to Parent Context	<input type="checkbox"/> Requires a key assignment <input type="checkbox"/> Does not require a key assignment
An event from Parent Context to Child Context	<input type="checkbox"/> Requires a key assignment <input type="checkbox"/> Does not require a key assignment
Logic within the same context	<input type="checkbox"/> Requires a key assignment <input type="checkbox"/> Does not require a key assignment
An event from No Context to a Context	<input type="checkbox"/> Requires a key assignment <input type="checkbox"/> Does not require a key assignment

Correct Answer:

Answer Area

<u>Rule Description</u>	<u>Key Assignment Required?</u>
An event from Child Context to Parent Context	<input checked="" type="checkbox"/> Requires a key assignment <input type="checkbox"/> Does not require a key assignment
An event from Parent Context to Child Context	<input type="checkbox"/> Requires a key assignment <input checked="" type="checkbox"/> Does not require a key assignment
Logic within the same context	<input checked="" type="checkbox"/> Requires a key assignment <input type="checkbox"/> Does not require a key assignment
An event from No Context to a Context	<input checked="" type="checkbox"/> Requires a key assignment <input type="checkbox"/> Does not require a key assignment

